

# MEDICI

## ACOUSTIC FABRICS

### UPHOLSTERY FABRICS FOR ABSORBING SOUND.



The world's finest designers and interior decorators are now using acoustic fabrics for the dual purpose of creating attractive interiors and at the same time reducing noise, echo's and reverberations in rooms, whether residential, offices, hospitality, commercial, public and healthcare spaces. Acoustic sound absorbing fabrics greatly adds to the traditional methods of installing acoustic solutions on the walls and ceilings. It is a two in one solution, décor and acoustics.

Glass, concrete, steel, tiled floors, marble and other are hard smooth materials reflect sound and create noisy reverberations. Acoustic Textiles can counteract this. They absorb sound and thus reduce noise pollution. The possibility for acoustic room design with textiles are many and varied. They can be used as curtains, cushions, drapes, room dividers, wall and ceiling coverings, panels or upholstery fabrics.

Different fabrics have different sound absorbing qualities. It depends on weight, porosity and weaving technology. The effect of the acoustic fabrics is confirmed by test records compliant with ISO 354, ISO 11654 and DIN EN 29053.

The ability of a material to absorb sound is measured by the NRC values or sound absorption coefficient's ( $\alpha_w$ ) and they range from 0-1. The higher the value the higher the sound absorbency. 0,85 is much better than 0,35.

**ALL MEDICI ACOUSTIC FABRICS ARE BACKED BY ACOUSTIC TEST CERTIFICATION.**

# MEDICI

**Velour and wool fabrics** are the classics among acoustic fabrics due to their fluffy surface. That is why we find them in theatres and cinemas.

**Upholstery fabrics** such as velour, wool fabrics and fabrics with textured surfaces are suitable as sound absorbing upholstery fabrics.

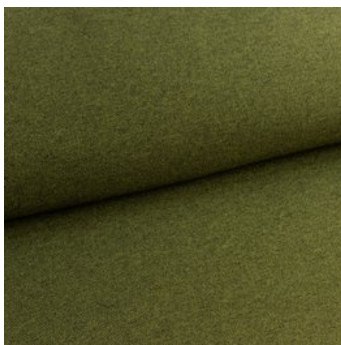
## ACOUSTIC UPHOLSTERY FABRICS

CLICK ON LINKS TO SEE SPECIFICATIONS AND THE FULL RANGE OF COLOURS



**GAVI . 0,60. CLASS C. UPHOLSTERY, 140CM, 280G/SQM, FR, LIGHT 5/6, 80,000 RUBS. 100% POLYESTER/TREVIRA CS**

<https://delius.de/en/products/contract-fabrics/gavi/>



**GENUA. 0,85 CLASS B. UPHOLSTERY 140CM, 560 GR/SQM, 100% POLYESTER/TREVIRA CS, FR, LIGHT 6/7, 100,000 RUBS**

<https://delius.de/en/products/contract-fabrics/genua/>

# MEDICI



**GOMEZ 0,90 CLASS A**, UPHOLSTERY, 140CM, 525 GR/SQM, 100% POLYESTER/TREVIRA CS, FR, LIGHT 5/6, 100,000 RUBS

<https://delius.de/en/products/contract-fabrics/gomez/>



**MANCHESTER 0,65 CLASS C**, UPHOLSTERY, 30,000 RUBS, 100% WOOL, 155CM, 390 GR.SQM, 100% WOOL, FR, LIGHT 5/6, WASH 40C,

<https://delius.de/en/products/contract-fabrics/manchester/>



**GESA. 0,75 CLASS C**, 80,000 RUBS UPHOLSTERY, 140CM 380 G/SQM, FR, WASH 40C, 100% POLYESTER TREVIRA CS.

<https://delius.de/en/products/contract-fabrics/gesa/>

# MEDICI



ELBA . **0,70 CLASS C**. 70,000 RUBS ,140CM, 100% POLYESTER/TREVIRA CS, LIGHT 5/6, FR, WASH 40C, ( ALSO CURTAINS)

<https://delius.de/en/products/contract-fabrics/elba/>



LEA. **0,90 CLASS A**, 100,000 RUBS. 520GR/SQM, 100% POLYESTER/TREVIRA CS, FR, LIGHT 5/6, WASH 40C, ( ALSO CURTAINS)

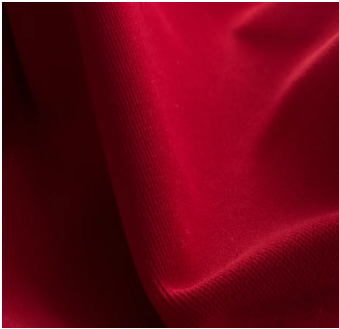
<https://delius.de/en/products/contract-fabrics/lea/>



MILA **0,75 CLASS C**, 100,000 RUBS, 100%WOOL, 140CM, 380 GR/SQM, 100% POLYESTER/TREVIRA CS, FR, LIGHT 5/6, WASH 40C ( ALSO CURTAINS)

<https://delius.de/en/products/contract-fabrics/mila/>

# MEDICI



OXFORD. **0,85 CLASS B**, 30,000 RUBS, UPHOLSTERY, BEDSPREADS, CUSHIONS, CURTAINS, 150CM, 390 GSQM, 100% WOOL, LIGHT 5/6, WASH 40C,

<https://delius.de/en/products/contract-fabrics/oxford/>



WATSON. **0,90, CLASS A, WOOL**, 25,000 RUBS 150CM,360 G/SQM, 100% WOOL, LIGHT 5/6, WASH 40C, ( ALSO CURTAINS)

<https://delius.de/en/products/contract-fabrics/watson/>



LUMA **0,75 CLASS C**, 50,000 RUBS, UPHOLSTERY AND CURTAINS, 300CM, 280G/SQM, 100% POLYESTER FR, LIGHT 5/6, WASH 40C

<https://delius.de/en/products/contract-fabrics/luma/>

# MEDICI



**PONTI. 0,75 CLASS C**, 30,000 RUBS ,UPHOLSTERY AND CURTAINS, 140CMM ,385 G/  
SQM, 100% POLYESTER FR, FR, LIGHT 5, WASH 40C,

<https://delius.de/en/products/contract-fabrics/ponti>



**PLATUS. 0,65 CLASS C**, 40,000 RUBS. UPHOLSTERY ND CURTAINS, 150/300CM, 240 G/  
SQM, 100% POLYESTER FR, FR, LIGHT 5/6, WASH 40C,

<https://delius.de/en/products/contract-fabrics/platus/>



**PLATUS. 0,65 CLASS C**, 40,000 RUBS. UPHOLSTERY AND CURTAINS, 150/300CM, 240 G/  
SQM, 100% POLYESTER FR, FR, LIGHT 5/6, WASH 40C,

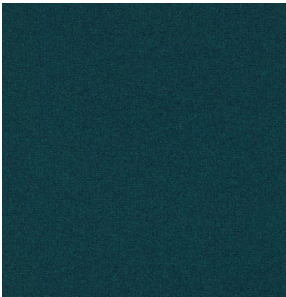
<https://delius.de/en/products/contract-fabrics/platus-300/>

# MEDICI



**ALEX 0,80.** 50,000 RUBS, UPHOLSTERY FOR CONTRACT USE, 140CM ,339G/SQM, FR,  
WASH 40C , 100% POLYESTER TREVIRA CS

<https://creationbaumann.com/en/product/alex/>



**ALVAR 1,00,** 60,000 RUBS, UPHOLSTERY FOR CONTRACT USE, 140CM, 586 G/SQM, FR,  
WASH 40C, 100% POLYESTER FR

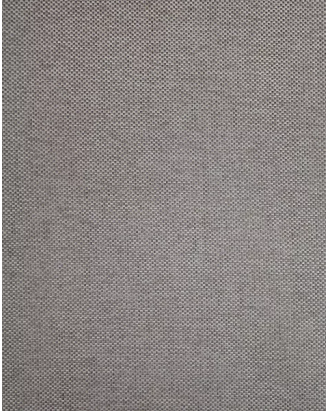
<https://creationbaumann.com/en/product/alvar/>



**ARNO. 0,90,** 40,000 RUBS, UPHOLSTERY FOR CONTRACT USE, 140CM, 381 G/SQM, FR,  
WASH 40C 100% POLYESTER TREVIRA CS

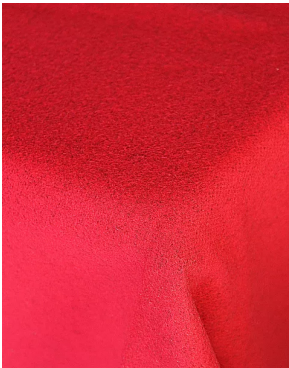
<https://creationbaumann.com/en/product/arno/>

# MEDICI



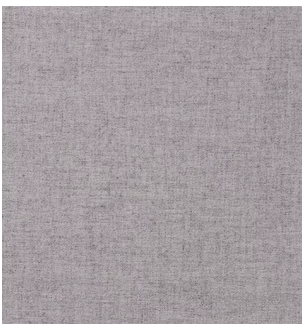
**CALVARO 0,75**, DOMESTIC UPHOLSTERY, 10,000 RUBS, 140CM, 364 G/SQM, FR, WASH 40C, 100% POLYESTER/TREVIRA CS

<https://creationbaumann.com/en/product/calvaro/>



**CAVALLO PIU. 0,75** 50,000 RUBS, UPHOLSTERY FOR CONTRACT USE, 155CM, 350 G/SQM, FR, 80% WOOL 20% POLYAMIDE

<https://creationbaumann.com/en/product/cavallo-piu/>

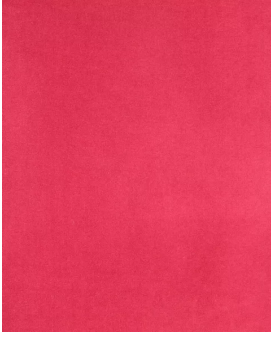


**VELOS 11. 0,80**, 90,000 RUBS. CONTRACT UPHOLSTERY, 140CM, 450 GR/SQM, FR, WASH 40C, 100% POLYESTER TREVIRA CS

<https://creationbaumann.com/en/product/velos-ii/>



# MEDICI



**LORD IV. 0,70, 60,000 RUBS. 140/300 CM, FOR CONTRACT UPHOLSTERY**

<https://creationbaumann.com/en/product/lord-iv/>



**SONIC MELT. 1,00. 70,000 RUBS, FOR CONTRACT UPHOLSTERY, 150CM, 559 GR/SQM, FR, WASH 40C, 100% POLYESTER TREVIRA CS**

<https://creationbaumann.com/en/product/sonic-melt/>



**SONIC PLUS. 1,00, 70,000 RUBS , ALSO FOR CONTRACT UPHOLSTERY 150CM, 559 GR/SQM, FR 100% POLYESTER TREVIRA CS**

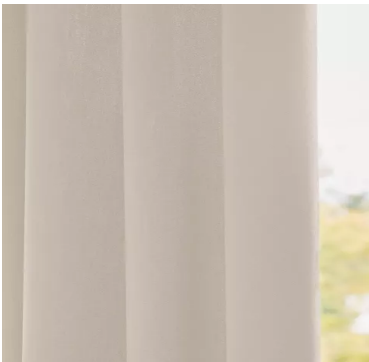
<https://creationbaumann.com/en/product/sonic-plus/>

# MEDICI



UMBRIA ECO, **0,70**. 30,000 RUBS, RESIDENTIAL UPHOLSTERY, 300CM, 281 G/SQM, FR, 100% POLYESTER TREVIRA CS,

[https://creationbaumann.com/product/umbria-eco/?attribute\\_color=27190](https://creationbaumann.com/product/umbria-eco/?attribute_color=27190)



UMBRIA IV. **0,70**, 50,000 RUBS, – 150/300CM, 281 G/SQM. FR, 100% POLYESTER TREVIRA CS

## **BREATHABLE UPHOLSTERY FABRICS (NOT SOUND ABSORBING)**

**ULTRA-FABRICS BREATHABLE POLYURETHANE FAUX LEATHER LOOK ALIKE – ZERO CHEMICALS OR VOC**

**A breathable faux leather collection made from polyurethane to cover suitable acoustic materials which can be used for upholstery (300,000 rubs), ceilings, walls and space dividers. It has a noise reduction coefficient of 0,65. It resists stains, is bleach cleanable and does not warp, pill or sag.**

# MEDICI



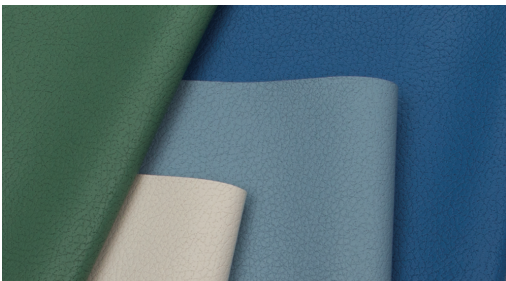
**FRESCO. 0,95. 160,000 RUBS.**

<https://www.ultrafabricsinc.com/collections/breathable-technology/fresco>



**BRISA 0,95. 160,000 RUBS**

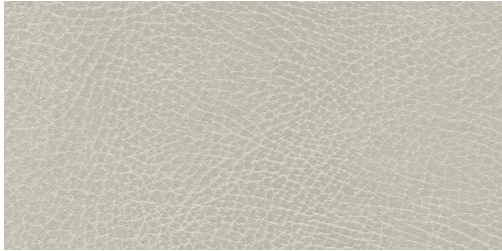
<https://www.ultrafabricsinc.com/collections/breathable-technology/brisa>



**BRISA DISTRESSED 0,95 RUSTIC**

<https://www.ultrafabricsinc.com/collections/breathable-technology/brisa-distressed>

# MEDICI

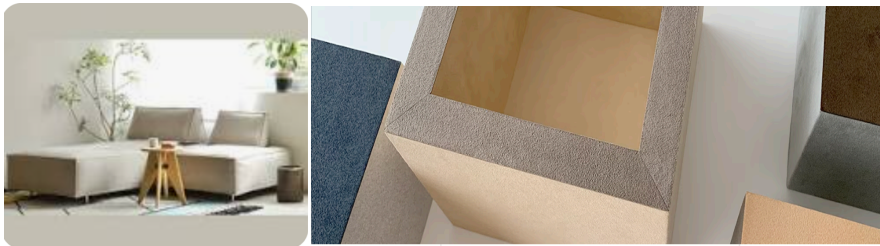


## **ULTRASUEDE BREATHABLE ACOUSTIC FABRIC**

HP 5539 Thickness 1mm, Width 1.42 meters, 375 g/sqm, 200,000 rubs, Acoustic sound absorption **ASTMC 423-02.**

USAGE Interiors and Upholstery, Apparel, Footwear, Bags and Accessories.

[https://www.ultrasuede.us/products/pdf/Ultrasuede\\_HP\\_colorcard.pdf](https://www.ultrasuede.us/products/pdf/Ultrasuede_HP_colorcard.pdf)



## **ALCANTARA BREATHABLE FABRIC**

<https://www.alcantara.com/colors/interior-nautical-aviation-colour-charts/>



FOR MORE INFORMATION PLEASE CONTACT JOSEPH

TEL +27 (0)11 883 3811

MOBILE +27 (0)83 263 2774

WEB [www.medici.co.za](http://www.medici.co.za)

E MAIL [medicijosephdavis@gmail.com](mailto:medicijosephdavis@gmail.com); [joseph@medici.co.za](mailto:joseph@medici.co.za)

LIKE US ON FACEBOOK [www.facebook.com/medicicontract](http://www.facebook.com/medicicontract)